



POWERING AFFORDABLE CARE

with clinical drug monitoring

Using drug testing to monitor medication adherence can help to identify prescribed and nonprescribed substances, patient compliance with critical medications, harmful drug interactions, and potential substance use disorders



Streamlining behavioral healthcare decisions through comprehensive and efficient drug monitoring, Quest Diagnostics has you and your patients covered

Caring for patients in a behavioral health setting requires more than clinical expertise and compassion. It requires efficient, economical tools for responsible and cost-effective laboratory testing, and diagnostic insight for personalized treatment plans. By providing the right tests and the right technology at the right costs, Quest Diagnostics helps you optimize your behavioral health practice while allowing you to make more informed patient care decisions and help keep your patients safe.

Healthcare providers have trusted Quest Diagnostics with their patients' diagnostic needs for decades. Our reputation in clinical laboratory diagnostics is built on our comprehensive and reliable test menu, coupled with our unparalleled commitment to service. From the start, we collaborate with you to offer practical and responsible test selection—a valuable foundation that provides the right tests at the right time, helping to minimize over-testing while providing the right level of information needed to make informed decisions.

When it comes to drug monitoring, Quest Diagnostics is here for you



Drug monitoring menu, options, and services

Discuss what tests to use, specimen requirements, and whether or not to select medMATCH®.



Drug monitoring results inquiries and interpretation

Discuss results interpretation, and develop the right testing plans for your patients and practice.



Drug monitoring consultation

Schedule a call with our toxicology experts on more complex questions.

Our experts are available by phone Monday-Friday, 8:00 AM–10:00 PM EST

1.877.40.RXTOX (1.877.407.9869)

Quest agrees with CDC and multiple other guidelines that drug monitoring is the standard of care when controlled substances are prescribed. This can help ensure compliance, and identify harmful drug interactions, misuse, abuse, and diversion.

With a broad selection of tests, fast turnaround time, and accessible results **available at the right cost**, we can help you efficiently make informed care decisions.



A trusted lab committed to responsible testing

- More than 50 years of expertise in diagnostic testing
- State-of-the-art testing with enhanced sensitivity
- Over 600 medical and scientific experts on staff—including clinical leaders in toxicology, pain medicine, and mental health disorders—who are available for consultation and to help with results interpretation

One lab for all your testing needs

- A comprehensive, state-of-the-art drug testing menu to cover prescribed, non-prescribed, and illicit drugs
- A broad selection of drug tests and panels appropriate for multiple patient audiences, including pain medications, stimulants, sedatives, antidepressants, antipsychotics, and other controlled substances, as well as illicit drugs
- In addition, we offer testing for infectious diseases, women's and reproductive health, cancer, neurological diseases, cardiovascular disease, metabolic disorders, and general health
- Oral fluid specimen collection available as an alternative to urine for drug testing

A lab that's easy to work with

- Manage all of your laboratory needs with a single login to our Quantum® Lab Services Manager
- Simplify your lab test ordering, tracking, supplies, and courier scheduling with just a few clicks
- Seamlessly interface with nearly 850 EHRs, allowing clinicians to order and obtain all laboratory results directly
- Support clinician/patient interactions with easy-to-read results



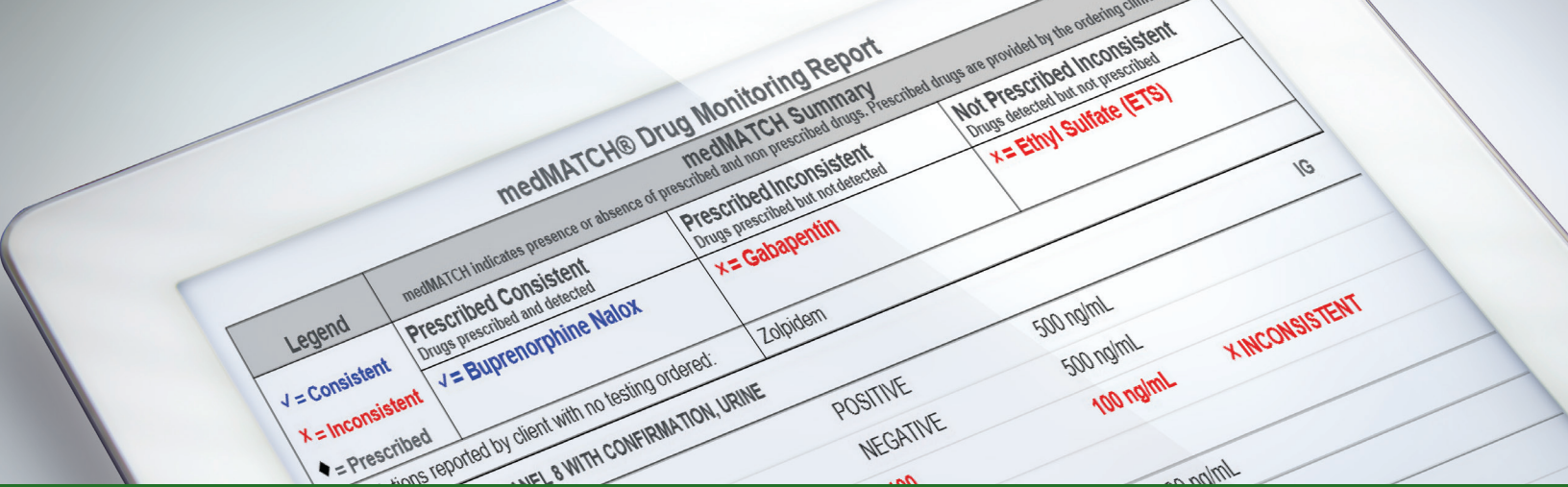
We believe good care must be balanced by cost. That's why we provide responsible drug testing.

Because Quest is in-network for >90% of lives nationwide* and has preferred lab network status with numerous major health plans, testing is more accessible for your patients.

For uninsured or qualified patients, we offer special programs that can include patient assistance, discounts, and payment plans. Because every patient is different, each case is handled personally—we work with patients to develop a payment plan that meets their needs.

Learn more at [QuestDiagnostics.com/PatientAssistanceProgram](https://www.questdiagnostics.com/PatientAssistanceProgram)

* This is directional data. It is based on 2020 HealthLeaders membership data of private third-party payers at the Managed Care Organization (MCO) level, as well as Quest internal data. Information is believed to be accurate as of January 1, 2020; however, it is subject to change. Does not include Kaiser Permanente access data.



Quest Diagnostics offers a comprehensive, state-of-the-art test menu for you and your patients

We know that you and your patients need more flexibility than a one-size-fits-all approach. That's why we put the power of matching the right test for the right patient into your hands with several testing options that meet your needs across multiple situations:

- Presumptive testing
- Presumptive with reflex to definitive testing
- Definitive testing
- Our medMATCH reporting option is available for the majority of our test offerings and provides results that correspond to your list of provided prescriptions
- We provide testing options to meet your sample requirement needs—including urine and oral fluid
- We have a network of more than 2,100 Patient Service Centers (PSCs) to make testing more accessible for patients; in addition, we recently introduced a self-collection option with materials mailed to the patient's home, for when in-office collection is not an option

Our comprehensive test menu covers a broad range of substances

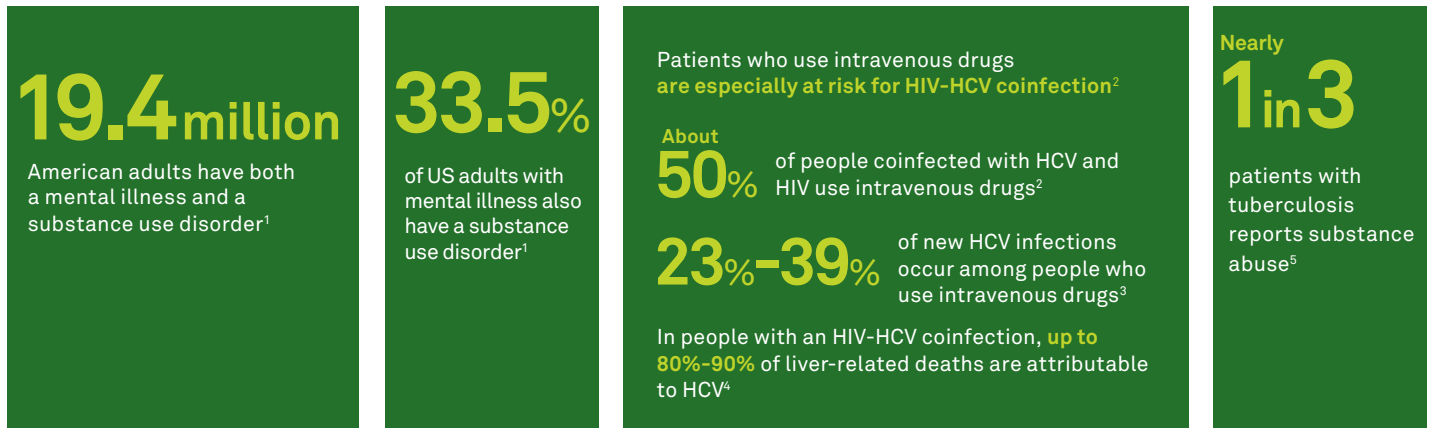
Alcohol metabolites (EtG, EtS)	Buprenorphine with naloxone	Mitragynine
Alcohol biomarkers (PEth)	Carisoprodol	Naltrexone
Amphetamines	Cocaine metabolite	Opiates
Amphetamines, with reflex to d-methamphetamine (dextromethamphetamine) and l-methamphetamine (levomethamphetamine) isomers	Eszopiclone	Oxycodone
Antidepressants	Fentanyl	Phencyclidine
Antipsychotics (urine)	Gabapentin	Pregabalin
Antipsychotics (serum)	Heroin metabolite	Propoxyphene
Barbiturates	Marijuana metabolite	Synthetic cannabinoids
Benzodiazepines	MDMA/MDA	Synthetic stimulants
	Meperidine	Tapentadol
	Methadone metabolite	Tramadol
	Methamphetamine d/l isomers	Tricyclic antidepressants
	Methylphenidate	Zolpidem

For the complete Test Directory, visit [QuestDrugMonitoring.com/test-directory](https://www.questdiagnostics.com/test-directory)



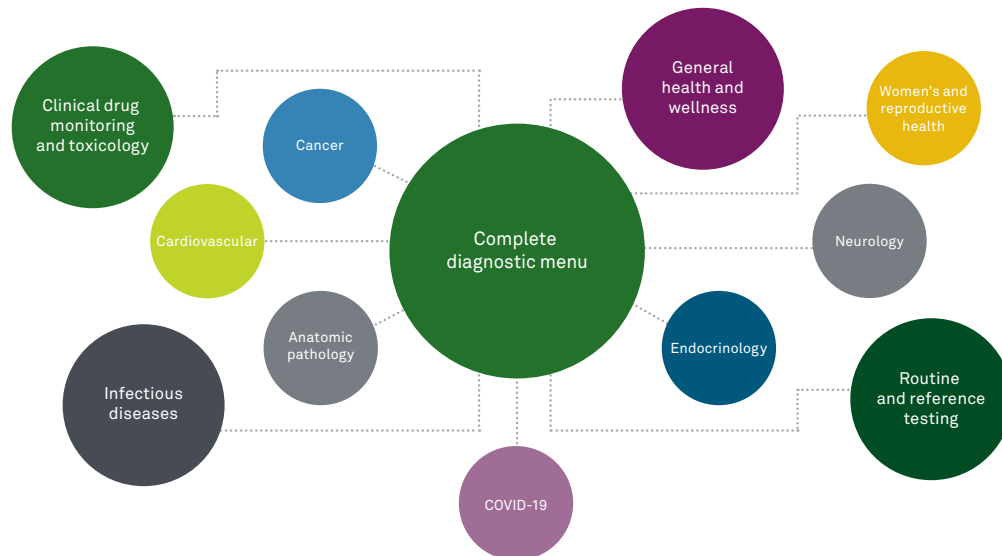
Supporting your patients with diverse testing for diverse needs

We recognize how complex patient care can be, and the need to ensure the overall health of your patients, particularly when you are faced with multiple conditions due to common comorbidities.



Diverse clinical needs require diverse testing. In addition to our clinical drug monitoring services, we offer a full menu from routine testing to specialized testing across all categories to meet the diagnostic needs of your practice and your patients.

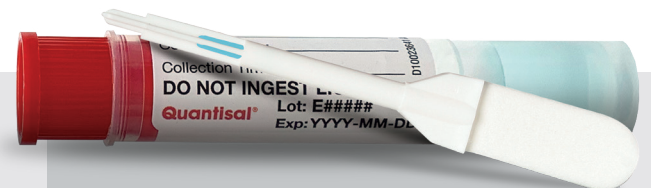
Lab testing for the behavioral health practice—from routine to specialty



Quantisal® oral collection device: fast, convenient specimen collection

Quest Diagnostics knows that having options when monitoring for use (or non-use) of drugs is beneficial to you and your patients. For those situations when urine collection is not practical or observed collection is needed—oral fluid collection is a convenient and effective alternative.

Quantisal® oral fluid collection typically takes about 5 minutes, **reducing time in the office and improving convenience.**



- Volume indicator window ensures enough specimen for screening, confirmation, and repeat testing
- Convenient collection and fast turnaround time
- Optimal for observed collection

Take advantage of our medMATCH® reports

Our medMATCH® reports are designed to provide actionable insights with the goal of “at-a-glance” interpretation. The reports provide a summary of your patient’s consistent and inconsistent results for prescribed drugs, and also include reporting on nonprescribed, inconsistent drugs. This allows you to have a better view of drugs that your patient is taking, address any noncompliance issues, and be alerted to any potential drug misuse or dangerous drug combinations.

medMATCH reports offer providers an intuitive, streamlined process from ordering to the delivery of the final report.

medMATCH® Drug Monitoring Report			
Legend	medMATCH Summary medMATCH indicates presence or absence of prescribed and non prescribed drugs. Prescribed drugs are provided by the ordering clinician.		
✓ = Consistent	Prescribed Consistent Drugs prescribed and detected	Prescribed Inconsistent Drugs prescribed but not detected	Not Prescribed Inconsistent Drugs detected but not prescribed
✗ = Inconsistent	✓ = Buprenorphine Nalox	✗ = Gabapentin	✗ = Ethyl Sulfate (ETS)
◆ = Prescribed			
Prescriptions reported by client with no testing ordered: Zolpidem			
DRUG MONITORING, PANEL 8 WITH CONFIRMATION, URINE			
Alcohol Metabolites	POSITIVE	500 ng/mL	
Ethyl Glucuronide (ETG)	NEGATIVE	500 ng/mL	
Ethyl Sulfate (ETS)	100	100 ng/mL	✗ INCONSISTENT
Alcohol Metab Comments: See Alcohol Metab Notes, LDT Notes			
Amphetamines	NEGATIVE	500 ng/mL	
Benzodiazepines	NEGATIVE	100 ng/mL	
Buprenorphine	POSITIVE	5 ng/mL	
◆ Buprenorphine	101	2 ng/mL	✓ CONSISTENT
◆ Norbuprenorphine	105	2 ng/mL	✓ CONSISTENT
◆ Naloxone	110	2 ng/mL	✓ CONSISTENT
Buprenorphine Comments: See Buprenorphine Notes, LDT Notes			

medMATCH Summary expanded to 3 categories

Alerts clinician to nontested prescription drugs

Inconsistent results are flagged

Drug-class-specific notes and lab-developed test (LDT) notes are consolidated and listed at the end of report

Consistent results for prescribed drugs are flagged



Quest Diagnostics Health Trends®

At Quest Diagnostics, our goal is to serve you in a way that supports the needs of your practice. That's why we regularly deliver Health Trends®, a series of data-supported scientific reports that provide insights into critical healthcare issues. We provide our unique findings to empower better patient care, population health, and public policy.

Our most recent Health Trends report, **Drug Misuse in America 2022: A Decade Lost to the Drug Crisis**, examines more than 20 million deidentified clinical drug tests over the past 10 years.



A decade lost to the drug crisis

Ten years ago, drug overdoses claimed nearly 42,000 lives annually in the United States. By the end of 2021, that number rose to nearly 108,000. Fueled by increased access to illicit drugs as well as barriers to healthcare access exacerbated by the COVID-19 pandemic, it's clear the drug crisis shows no signs of abating.

That's just 1 of the startling findings presented in **Drug Misuse in America 2022: A Decade Lost to the Drug Crisis**, a Quest Diagnostics Health Trends annual report that examines more than 20 million deidentified clinical drug tests over 10 years.



Additional key findings from the report include:

- **Nearly half (49%)** of people tested showed evidence of drug misuse in 2021
- **52% of drug tests showed evidence of drug mixing**—a 58% increase from 2012 (33%)
 - The data is concerning given other data suggesting an increase in the mixing of synthetic fentanyl with other drugs, often without the user's knowledge.
- **5-fold increase in use of amphetamines**, with 9.2% of patients testing positive, compared to only 1.8% in 2012
- **Younger people ages 18-34** were more likely to show signs of misuse
- **Females were more likely to use pain and anxiety prescription medications**, while males had higher rates of illicit drugs



The report reveals a dual threat—**prescription and illicit drug misuse**—that places patients of all ages and all sexes at risk. The report's authors suggest a national conversation and commitment to policies that address underlying dynamics fueling the epidemic, and an urgency to identify drug misuse at the earliest stages, are needed to help save lives.









Looking for more data? Ask your representative for the full Quest Diagnostics Health Trends report or visit newsroom.questdiagnostics.com/health-trends

Quest Diagnostics **Clinical Drug Monitoring**

Rely on a trusted drug testing laboratory

Quest Diagnostics helps you protect your practice and patients with state-of-the-art testing, including an extensive menu for prescription pain medications, other controlled substances, and illicit drugs. With fast turnaround, accurate results, an industry-leading testing portfolio, and an array of on-staff toxicologists and medical experts, Quest is committed to working with you to provide the services, results, and insights you need at each stage of your patient's care.

Our state-of-the-art drug testing offering

-  **Comprehensive menu**—Prescription drugs used in treatment of chronic pain, ADHD, anxiety, depression, substance use disorder, other controlled medications, and substances of abuse
-  **Performance**—High-sensitivity, low cut-off levels designed to detect drugs at typical dosage levels. Fast turnaround time and results confirmation
-  **Reporting**—Optional medMATCH results interpretation: “Inconsistent” when results do not match prescriptions provided by clinician. Quarterly practice level data and analytics
-  **Connectivity and service**—Exceptional service and efficiency that aligns with your workflow. Connectivity with nearly 850 EMR systems
-  **Expert support**—Toxicology experts to answer questions on test selection and results interpretation at 1.877.40.RXTOX (1.877.407.9869)
-  **No surprise bills**—We're in-network for >90% of lives nationwide* and have preferred lab network status with major health plans—a connection that enables us to deliver real-time pricing for patients at the time of service

Stay current in drug monitoring with new insights, blog posts, and updated resources available at **QuestDrugMonitoring.com**



Contact your Quest Diagnostics sales representative:
call 1.866.MYQUEST (1.866.697.8378) or visit QuestDiagnostics.com.

* This is directional data. It is based on 2020 HealthLeaders membership data of private third-party payers at the Managed Care Organization (MCO) level, as well as Quest internal data. Information is believed to be accurate as of January 1, 2020; however, it is subject to change. Does not include Kaiser Permanente access data.

References

1. National Alliance on Mental Illness. Mental health by the numbers. Updated April 2023. Accessed June 7, 2023. <https://www.nami.org/mhstats>
2. Shayan SJ, Nazari R, Kiwanuka F. Prevalence of HIV and HCV among injecting drug users in three selected WHO-EMRO countries: a meta-analysis. *Harm Reduction Journal*. 2021;18(1):59. doi: <https://doi.org/10.1186/s12954-021-00505-4>
3. WHO. People who inject drugs. Accessed June 8, 2023. <https://www.who.int/teams/global-hiv-hepatitis-and-stis-programmes/populations/people-who-inject-drugs>
4. Kim, NH. Treatment of HCV in persons with HIV coinfection. *Hepatitis C Online*. Updated February 17, 2021. Accessed June 8, 2023. <https://www.hepatitisc.uw.edu/go/key-populations-situations/treatment-hiv-coinfection/core-concept/all>
5. Carney T, Rooney JA, Neiman N, et al. Transmission of tuberculosis among illicit drug use linkages (total): a cross-sectional observational study protocol using respondent driven sampling. *PLoS One*. 2022;17(2):e0262440. doi: 10.1371/journal.pone.0262440

Image content features models and is intended for illustrative purposes only.

QuestDiagnostics.com

Quest, Quest Diagnostics, any associated logos, and all associated Quest Diagnostics registered or unregistered trademarks are the property of Quest Diagnostics. All third-party marks—® and ™—are the property of their respective owners.
© 2023 Quest Diagnostics Incorporated. All rights reserved. SB7911 6/2023

